

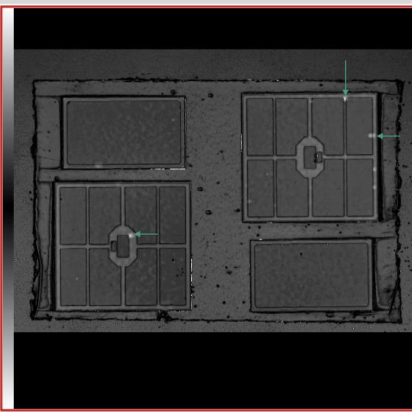
## NJ-Force:

## One step die- & substrate-attach

### Sinter pastes for large surface areas:

- Low pressure sintering
- High flexibility for surface finishes
- Only one step for complete module assembly
- Reduction of total cost of ownership with *All-in-one-sintering*

### Sintering on:

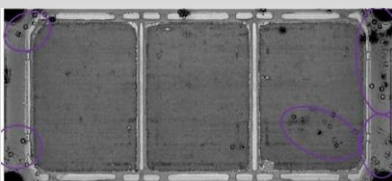
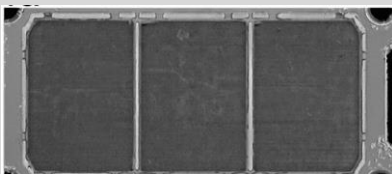


- ✓ High conductivity
- ✓ High die-shear
- ✓ TCT (1000+ cyc)
- ✓ Molded packages
- ✓ Highly reproducible
- ✓ Slit nozzle disp.

### Substrate attach with NJ-Force

- TCT - 55°C-125°C
- Top T = 0
- Bottom T = 1000

✓ Sintered



### Substrate Attach with SnAg3.5

- TCT - 55°C-125°C
- Top T = 0
- Bottom T = 1000

✗ Soldered

